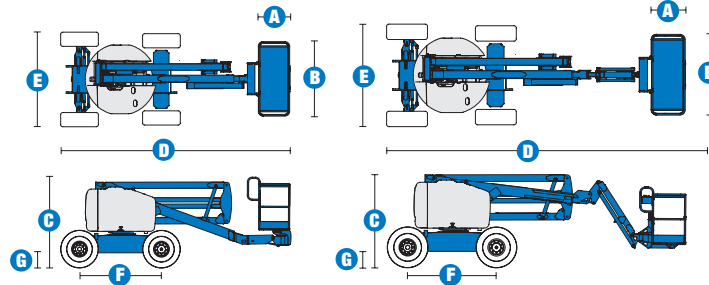
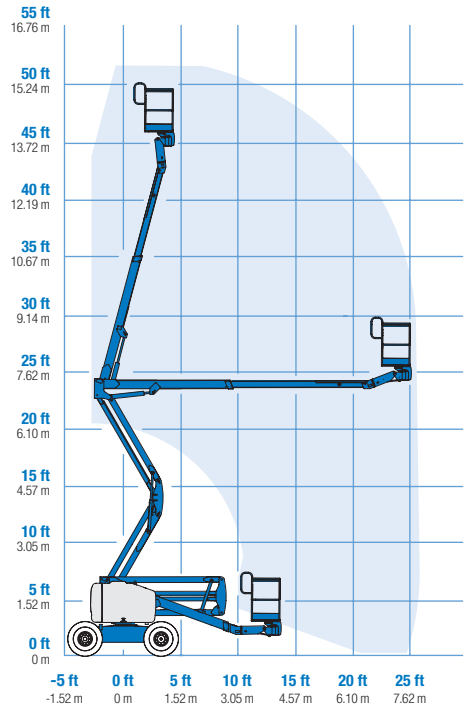


# Specifications



## RANGE OF MOTION Z™-45/25 RT



MODELS	Z™-45/25 RT		Z™-45/25J RT	
MEASUREMENTS	Metric	US	Metric	US
Working height maximum*	16 m	51 ft 11 in	16.07 m	52 ft 2 in
Platform height maximum*	14 m	45 ft 11 in	14.07 m	46 ft 2 in
Horizontal reach maximum*	7.62 m	25 ft	7.65 m	25 ft 1 in
Up-and-over clearance maximum	7.16 m	23 ft 6 in	7.16 m	23 ft 6 in
A Platform length	76 cm	2 ft 6 in	76 cm	2 ft 6 in
B Platform width	1.83 m	6 ft	1.83 m	6 ft
C Height - stowed	2.11 m	6 ft 11 in	2.11 m	6 ft 11 in
D Length - stowed	5.56 m	18 ft 3 in	6.83 m	22 ft 5 in
E Width	2.29 m	7 ft 6 in	2.29 m	7 ft 6 in
F Wheelbase	2.03 m	6 ft 8 in	2.03 m	6 ft 8 in
G Ground clearance - centre	39 cm	1 ft 3.5 in	39 cm	1 ft 3.5 in

## PRODUCTIVITY

Lift capacity	227 kg	500 lbs	227 kg	500 lbs
Platform rotation	180°	180°	160°	160°
Vertical jib rotation	-	-	135°	135°
Turntable rotation	355° non-continuous		355° non-continuous	
Turntable tailswing	zero	zero	zero	zero
Drive speed - stowed	8 km/h	5 mph	8 km/h	5 mph
Drive speed - raised **	1.1 km/h	0.68 mph	1.0 km/h	0.61 mph
Gradeability - 2WD - stowed***	30%	30%	30%	30%
Gradeability - 4WD - stowed***	45%	45%	45%	45%
Turning radius - inside	1.70 m	5 ft 6 in	1.70 m	5 ft 6 in
Turning radius - outside	4.5 m	14 ft 9 in	4.5 m	14 ft 9 in
Controls	12 V DC proportional		12 V DC proportional	
Tyres	355/55 D625		355/55 D625	

## POWER

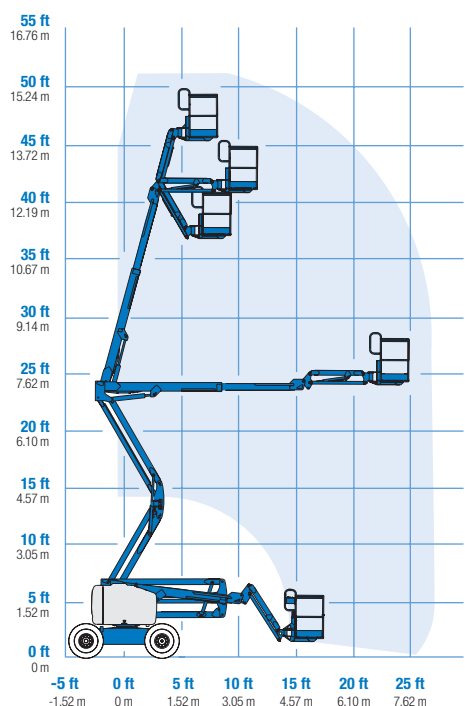
Power source	Ford DSG-423 4 cylinder petrol/LPG 75 hp (56 kW) Deutz diesel D 2011 L03i cylinder diesel 48 hp (35.8 kW) Perkins diesel 404-D22 4-cylinder diesel 51 hp (38 kW)			
Auxiliary power unit	12 V DC	12 V DC	12 V DC	12 V DC
Hydraulic tank capacity	90.8 L	24 gal	90.8 L	24 gal
Fuel tank capacity	64.4 L	17 gal	64.4 L	17 gal

## WEIGHT\*\*\*\*

2WD	6,203 kg	13,675 lbs	6,486 kg	14,300 lbs
4WD	6,294 kg	13,875 lbs	6,577 kg	14,500 lbs

## STANDARDS COMPLIANCE CE EN280, PB-10-611-03

## RANGE OF MOTION Z™-45/25J RT



\* The metric equivalent of working height adds 2 m to platform height. U.S. adds 6 ft to platform height.

\*\* In lift mode (platform raised), the machine is designed to operate on firm, level surfaces only.

\*\*\* Gradeability applies to driving on slopes. See Operator's Manual for details regarding slope ratings.

\*\*\*\* Weight will vary depending on options and/or country standards.

## Features

### EASILY CONFIGURED TO MEET YOUR NEEDS

#### PLATFORM OPTIONS

- Steel 1.83 m (6 ft) (standard)
- Steel 1.22 or 1.52 m (4 or 5 ft)

#### JIB OPTIONS

- Non-jib
- 1.52 m (5 ft) jib boom

#### POWER

- Deutz Diesel 48 hp (35.8 kW)
- Ford petrol/LPG 75 hp (56 kW)
- Perkins diesel 51 hp (38 kW)

#### DRIVE OPTIONS

- 2 x 4
- 4 x 4

#### AXLE OPTIONS

- Oscillating (standard on 4WD)
- Non-oscillating

#### TYRE OPTIONS

- Rough terrain air-filled (standard)
- Rough terrain foam-filled
- Rough terrain non-marking (air or foam-filled)

### STANDARD FEATURES

#### MEASUREMENTS

##### Z™-45/25 RT

- 16 m (51 ft 11 in) working height
- 7.62 m (25 ft) horizontal reach
- 7.16 m (23 ft 6 in) up-and-over clearance
- Up to 227 kg (500 lb) lift capacity

##### Z™-45/25J RT

- 16.07 m (52 ft 2 in) working height
- 7.65 m (25 ft 1 in) horizontal reach
- 7.16 m (23 ft 6 in) up-and-over clearance
- Up to 227 kg (500 lb) lift capacity

#### PRODUCTIVITY

- Self-levelling platform
- Hydraulic platform rotation
- Fully proportional controls
- Drive enable
- AC power cord to platform
- Horn
- Hour meter
- Tilt alarm
- Descent alarm
- 355° non-continuous turntable rotation
- Positive traction drive
- Two-speed wheel motors
- Certified load sensor



### STANDARD FEATURES cont.

#### POWER

- All engines are emission compliant
- 12 V DC auxiliary power
- Engine protection package
- Deutz intake air heater
- Swing-out engine tray

### OPTIONS & ACCESSORIES

#### PRODUCTIVITY

- Platform swing gate
- Half-mesh platform inserts with swing gate
- Platform top auxiliary rail
- Air line to platform
- Thumb rocker steer
- Fire resistant hydraulic oil
- Biodegradable hydraulic oil
- Standard aircraft protection package\*
- Deluxe aircraft protection package\*
- Basic hostile environment kit
- Tool tray
- Fluorescent tube caddy
- Pipe cradle (pair)
- Alarm package
- Panel cradle package
- Platform work lights
- Front driving lights
- Lockable platform control box cover
- Tow package

#### POWER

- Engine gauge package
- AC generator packages (110V/60Hz, 3000 W or 220V/50Hz, 2500 W)
- Cold weather packages
- Arctic packages
- Diesel scrubber/spark arrestor muffler
- Diesel spark arrestor muffler
- LPG tank 15.19 kg (33.5 lb) capacity
- Additional LPG tank with carrier

\*Reduces platform capacity to 200 kg (440 lbs).

#### UK

Millennium House  
Brunel Drive  
Newark NG24 2DE  
UK  
Tel: +44 (0)1476 584333  
Fax: +44 (0)1476 584334

#### France

10, ZA de la Croix St. Mathieu  
28320 Gallardon  
France  
Tel: +33 (0)2 37 26 09 99  
Fax: +33 (0)2 37 26 09 98

#### Germany

Finienweg 3  
28832 Achim/Bremen  
Germany  
Tel: +49 (0)4202 8852-0  
Fax: +49 (0)4202 8852-25

#### Spain

Gaià 31, Pol. Ind. Plá d'en Coll  
08110 Montcada i Reixac  
Barcelona  
Spain  
Tel: +34 93 572 50 90  
Fax: +34 93 572 50 91

#### Scandinavia

Importgatan 17  
422 46 Hisings Backa  
Sweden  
Tel: +46 31 57 51 00  
Fax: +46 31 57 90 20

#### Middle East

Terex Middle East  
PO Box 282325, Dubai  
U.A.E.  
Tel: +971 4 339 1800  
Fax: +971 4 339 1802  
Email: InfoME@terex.com

#### Genie United States

18340 NE 76th Street  
P.O. Box 97030  
Redmond, WA  
USA 98073-9730  
Tel: +1 425 881-1800  
Fax: +1 425 883-3475

**Email:** AWP-InfoEurope@terex.com

**Distributed By:**