

Gas Technologies

Dedicated to providing reliable, value for money gas, air and boosting equipment for today's diver.



DIVING GAS BOOSTER - DTB5C

SPECIFICATION:

Booster ratio: 1:36

Minimum inlet pressure: 20 Bar (290 psi)

Maximum outlet pressure: 250 bar (3625 psi)

Drive gas pressure required: 6-10 bar Max (87-145 psi)

PERFORMANCE DATA

(taken from actual test results on Job no 11553 Serial no 9854)

Flow rate 24 N/Lmin (0.85 cubic/ft/min)

Test Data calculated from a 65 bar inlet pressure.

Receiver volume: 2.7ltr

Air pressure inlet: 9 bar

Ambient temperature: 19°C

Gas inlet temperature: 20°C

Final gas outlet temperature: 24°C

Test Receiver temperature at finish: 22°C

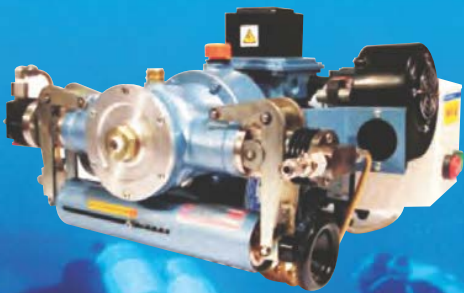
Final test pressure: 225 bar

Time to test pressure: 16m 23s

Inlet/outlet connection: 1/4" BSPP (M) 60° cone seat.

Gas Booster Pumps

Air Driven and
Electrically
Operated Booster
Pumps



DIVING GAS BOOSTER - DTB10C Type 1

The DTB10c type 1, as shown, comes as a working unit consisting of booster assembly, motor, DOL starter and cooling fans, and is intended for static installation.

SPECIFICATION:

- Inlet pressure 35 barg
- Reduced inlet pressure of 25 bar is permitted when outlet pressure required is less than 250 bar
- Flow rate 45 to 55 normal/litres/min
- Maximum outlet pressure 350 bar
- Power 0.55w
- Inlet connection 1/4" BSPP(F) |
- Outlet connection 1/4" BSPP(F)
- Electrical supply 240v or 414v 3Phase
- Approximate dimensions 500mm(W) 500mm(L) 300(H)
- Weight Approx 30Kg

LONDON

Telephone:

0208 981 7711

BARKING

Telephone:

0208 507 1145

BIRMINGHAM

Telephone:

0845 864 7970

GLASGOW

Telephone:

0845 6026 245

NEWRY

Telephone:

028 3082 1747

BELFAST

Telephone:

028 9032 0950

Web: www.demenexplant.co.uk

email: demenex@btinternet.com