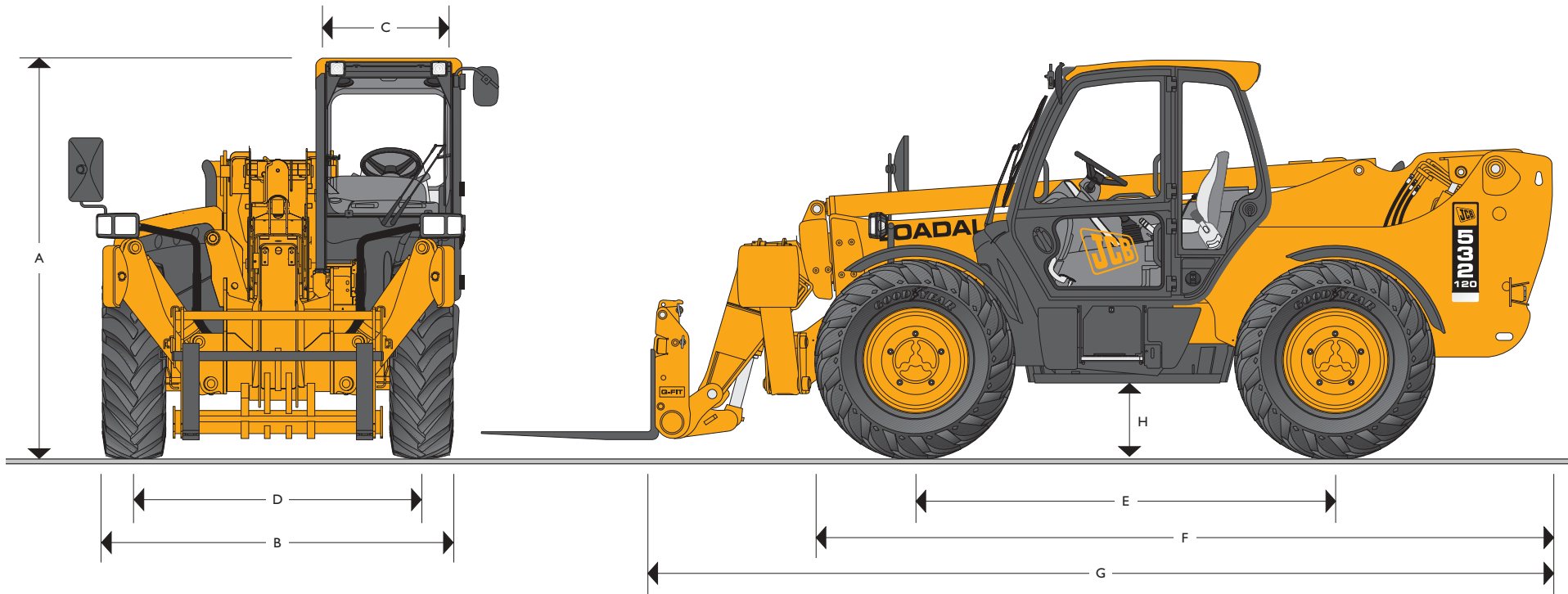




JCB LOADALL | 532-120



MAX. PAYLOAD: 3.2 tonnes (7055lb)
MAX. LIFT HEIGHT: 12 metres (39ft 4in)
MAX. HORSEPOWER: 74.6 kW (100hp)



STATIC DIMENSIONS

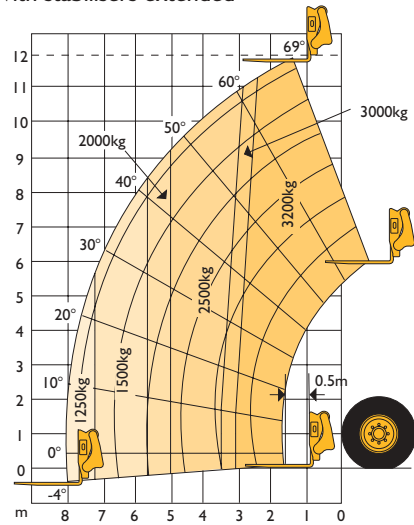
Machine model	532-120
	m (ft-in)
A Overall height	2.59 (8-6)
B Overall width (over tyres)	2.35 (7-9)
C Inside width of cab	0.94 (3-3)
D Front track	1.90 (6-3)
E Wheelbase	2.75 (9-0)
F Overall length to front tyres	4.83 (15-10)
G Overall length to front carriage	5.84 (19-2)
H Ground clearance	0.40 (1-4)

Machine model	532-120
	m (ft-in)
Width over fully extended stabilisers	2.73 (8-11)
Overall length to stabilisers - retracted	5.39 (17-8)
Overall length to stabilisers - extended	5.42 (17-10)
Outside turn radius (over tyres)	4.0 (13-2)
Departure Angle	Degrees 35
Weight	kg (lb) 9140 (20150)
Tyres	15.5/80-24



LIFT PERFORMANCE

With stabilisers extended



LIFT PERFORMANCE

With Stabilisers Extended

Maximum lift capacity	kg (lb)	3200 (7055)
Lift capacity to full height	kg (lb)	3200 (7055)
Lift capacity at full reach	kg (lb)	1250 (2756)
Lift height	m (ft-in)	12 (39-4)
Reach at maximum lift height	m (ft-in)	1.44 (4-9)
Maximum forward reach	m (ft-in)	8.0 (26-3)
Reach with 1 tonne load	m (ft-in)	8.0 (26-3)
Placing Height	m (ft-in)	11.42 (37-6)

Complies with FEM stability test 4.001R.

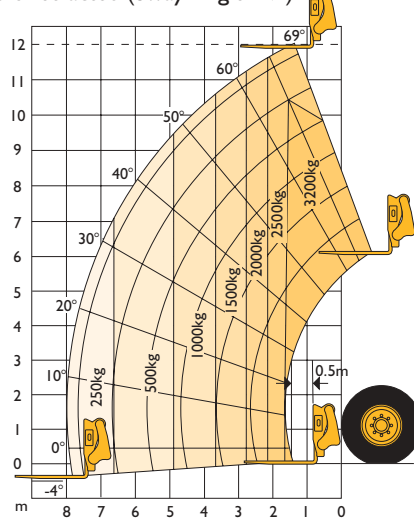
With Stabilisers Retracted

Maximum lift capacity	kg (lb)	3200 (7055)
Lift capacity to full height	kg (lb)	2500 (5512)
Lift capacity at full reach	kg (lb)	250 (551)
Lift height	m (ft-in)	12 (39-4)
Reach at maximum lift height	m (ft-in)	1.44 (4-9)
Maximum forward reach	m (ft-in)	8.0 (26-3)
Reach with 1 tonne load	m (ft-in)	4.89 (16-0)
Placing Height	m (ft-in)	11.42 (37-6)

Complies with stability test EN1459 annex B.

Chassis Levelling (Sway)*

With Stabilisers retracted (Sway Angle $\pm 9^\circ$)



*Factory fitted option.



ENGINE

4 cylinders. Bore 103mm (4.06in); stroke 127mm (5in); displacement 4.20ltr (256 in³).

Latest technology and advanced design provides low fuel consumption, reduced noise, high torque and power output, total reliability and minimal maintenance.

Easily replaceable pre-finished dry liners, five bearing, heat treated crankshaft. Expansion controlled pistons. Two-stage, dry type air filter with primary and safety elements.

Engine conforms with EC mobile off-highway emissions regulations (stage I).

Engine options: Power at 2200 rpm – 59.7kW (80hp) naturally aspirated – Torque at 1400 rpm 290 Nm (213.8 lbf/ft).
Power at 2200 rpm – 74.6kW (100hp) turbo charged – Torque at 1400 rpm 402 Nm (296 lbf/ft).

TRANSMISSION

JCB 4 speed powershift transmission incorporating torque converter, bevel box and a 4 speed powershift gearbox in one resiliently mounted unit.

A combined steering column mounted switch incorporating directional control and 4 forward and reverse powershift gears. Travel speed 25km/h (15.5mph).

Front and rear drive axles

JCB epicyclic hub reduction drive/steer axles with Max-Trac torque proportioning differentials. Permanent 4 wheel drive.

BRAKES

Service brakes - Servo assisted hydraulically activated, self-adjusting, oil-immersed in-board multi-disc type in front and rear axle.

Parking brake - Hand operated disc brake on output of gearbox.

BOOM AND CARRIAGE

Boom is manufactured from high tensile steel.

Low maintenance, hard wearing pads.

JCB Q-fit self-levelling carriage with lever operated pin locking accepts pallet forks and a wide range of attachments.

SAFETY CHECK VALVES

Fitted to carriage tilt, telescopic and boom lift rams.

Stabilizer legs and chassis levelling rams fitted with check valves on rod and head side, plus cut-out system to disconnect movement when boom is raised.

SERVICE CAPACITIES

	litres (UK gal)
Fuel tank	125 (27.5)
Hydraulic tank	131 (28.8)
Coolant	23 (5.1)

HYDRAULICS

Single gear pump, with suction strainer and filter.

Operating system pressure	bar (psi)	241 (3500)
Pump max. flow @ 2200rpm	ltr/min	110
Hydraulic Cycle Times		Seconds
Boom raise		9.9
Boom lower		7.6
Extend		13.0
Retract		13.7
Bucket dump		2.2
Bucket crowd		2.9

ELECTRICS

12 v negative earth. 92 AH battery. 65 amp alternator. Full road lighting. Reversing light. Direction indicators. Hazard warning. Reverse alarm.

CAB

Quiet safe and comfortable cab conforms to ROPS ISO 3471 and FOPS ISO 3449. Tinted glass all round with laminated roof screen. Roof bars, front, rear and roof screen wash/wipe and heater/screen demister. Opening rear window. Audio-visual warning system for coolant temperature, engine oil pressure, air cleaner, battery charge, transmission oil temperature and pressure. Hourmeter, road speed and inclinometer.

Engine temperature and fuel gauge.

Mechanical joystick, direct acting hydraulic control levers. Adjustable steer column incorporates stalk bar powershift change and forward reverse shuttle. Throttle and brake pedal floor mounted. Adjustable suspension seat with adjacent park brake.

Automatic eye level audio-visual load moment indicator warning system receiving a signal from a load sensor on the rear axle.

This system continuously monitors the machine's forward stability and leaves the operator in control at all times.

Optional indicator lamp to show when the stabilizers are on firm ground.

Safety canopy as above but with side glass and roof glass only (screen wiper and heater/screen demister not applicable).

STEERING

Three steer mode options: front wheel steer; all wheel steer; crab steer: operated from in the cab by a selection switch with automatic alignment.

OPTIONS AND ACCESSORIES

Options: Front and rear working lights, rotating flashing beacon, fire extinguisher, industrial tyres, electrical 2/4WD disconnect, windscreen guard, load guard, suspension seat, air suspension seat, deluxe cab trim, roof and front screen blind, radio kit, heavy duty battery, air conditioning, sway chassis and boom end auxiliary service.

Attachments: Contact your local dealer for details of the comprehensive range.



A GLOBAL COMMITMENT TO QUALITY

JCB's total commitment to its products and customers has helped it grow from a one-man business into Britain's largest privately owned manufacturer of backhoe loaders, crawler excavators, wheeled excavators, telescopic handlers, wheeled loaders, dump trucks, rough terrain fork lifts, industrial fork lifts, mini/midi excavators, skid steer loaders and tractors.

By making constant and massive investments in the latest production technology, the JCB factories have become some of the most advanced in Europe.

By leading the field in innovative research and design, extensive testing and stringent quality control, JCB machines have become renowned all over the world for performance, value and reliability.

And with a global sales and service network of over 400 distributors and agents, the company exports over 70% of its production to all five continents.

Through setting the standards by which others are judged, JCB has become one of Britain's most impressive success stories.

